








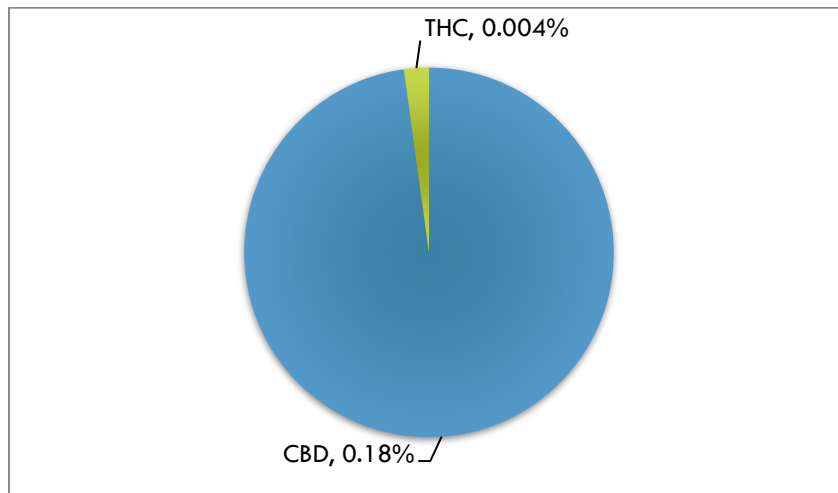


POTENCY REPORT-WT/WT%

Material Tested: Relief Cream
Testing Method: UPLC-DAD
Date Tested 08/2/2018
Batch Number O0730803
Testing Analyst Benjamin Dennis Reviewed by Jeremy Riggle, PhD
Total Product Mass 56 grams

ACIDIC COMPOUND mg/unit		NEUTRAL COMPOUND mg/unit	
CBDA	<0.1%	CBD	0.18% 
THCA	<0.1%	THC	<0.1% 
CBCA	<0.1%	CBC	<0.1% 
CBGA	<0.1%	CBG	<0.1% 
CBNA	<0.1%	CBN	<0.1% 
THCVA	<0.1%	THCV	<0.1% 
CBDVA	<0.1%	CBDV	<0.1% 

Cannabinoid Content (wt/wt)



Mary's Nutritionals, LLC is a wholly owned subsidiary of Mary's Medicinals, LLC. Information provided in this report is for CBD rich hemp cultivated by Elite Botanicals, Loveland CO.

