








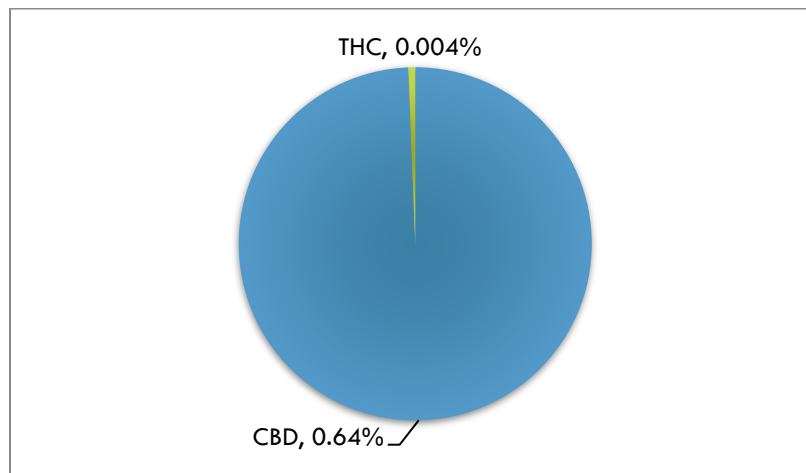


POTENCY REPORT

Material Tested: Pet Pen CBD
Testing Method: UPLC-DAD
Date Tested 01/18/2018
Batch Number H0116829
Testing Analyst Benjamin Dennis; Reviewed by: Jeremy Riggle, PhD
Total Product Mass 8.4g

| ACIDIC COMPOUND mg/unit | | NEUTRAL COMPOUND mg/unit | |
|----------------------------|-------|-----------------------------|---|
| CBDA | <0.1% | CBD | 0.64%  |
| THCA | <0.1% | THC | <0.1%  |
| CBCA | <0.1% | CBC | <0.1%  |
| CBGA | <0.1% | CBG | <0.1%  |
| CBNA | <0.1% | CBN | <0.1%  |
| THCVA | <0.1% | THCV | <0.1%  |
| CBDVA | <0.1% | CBDV | <0.1%  |

Cannabinoid Content (wt/wt)



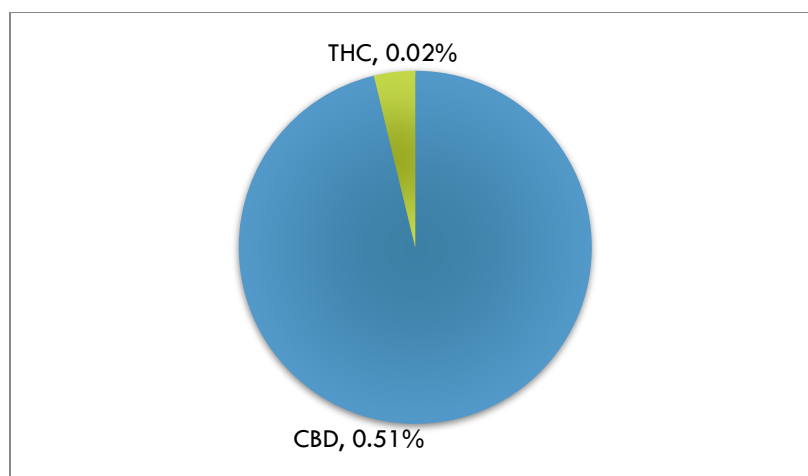
Mary's Nutritionals, LLC is a wholly owned subsidiary of Mary's Medicinals, LLC. Information provided in this report is for CBD rich hemp cultivated by Elite Botanicals, Loveland CO.



Material Tested: Pet Pen CBD
 Testing Method: UPLC-DAD
 Date Tested: 03/20/2017
 Batch Number: H0306815
 Testing Analyst: Jessica Reedy; Reviewed by: Jeremy Riggle PhD
 Total Product Mass: 8.5g

| ACIDIC COMPOUND mg/unit | | NEUTRAL COMPOUND mg/unit | |
|----------------------------|-------|-----------------------------|-------|
| CBDA | <0.1% | CBD | 0.51% |
| THCA | <0.1% | THC | <0.1% |
| CBCA | <0.1% | CBC | <0.1% |
| CBGA | <0.1% | CBG | <0.1% |
| CBNA | <0.1% | CBN | <0.1% |
| THCVA | <0.1% | THCV | <0.1% |
| CBDVA | <0.1% | CBDV | <0.1% |

Cannabinoid Content (wt/wt)










Mary's Nutritionals, LLC is a wholly owned subsidiary of Mary's Medicinals, LLC. Information provided in this report is for CBD rich hemp cultivated by Elite Botanicals, Loveland CO.



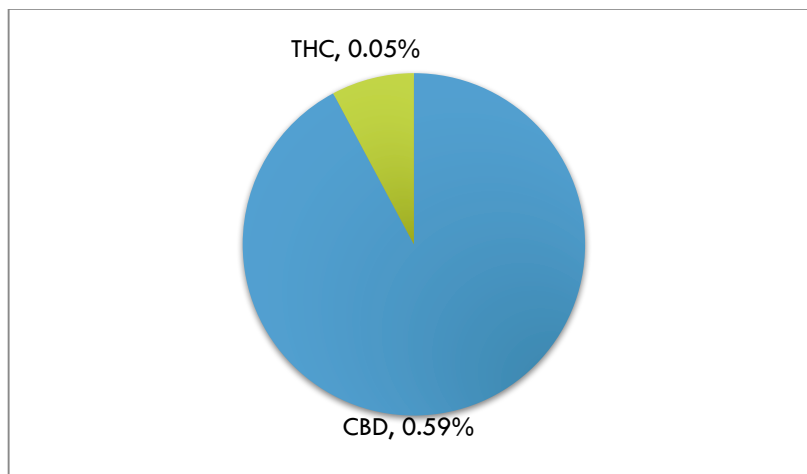


POTENCY REPORT

Material Tested: Whole Pet Pen
Testing Method: UPLC-DAD
Date Tested 11/15/2017
Batch Number H1010714
Testing Analyst Jessica Reedy; Reviewed by: Jeremy Riggle PhD
Total Product Mass 8g

| ACIDIC COMPOUND mg/unit | | NEUTRAL COMPOUND mg/unit | |
|----------------------------|-------|-----------------------------|---|
| CBDA | <0.1% | CBD | 0.59%  |
| THCA | <0.1% | THC | <0.1%  |
| CBCA | <0.1% | CBC | <0.1%  |
| CBGA | <0.1% | CBG | <0.1%  |
| CBNA | <0.1% | CBN | <0.1%  |
| THCVA | <0.1% | THCV | <0.1%  |
| CBDVA | <0.1% | CBDV | <0.1%  |

Cannabinoid Content (wt/wt)



Mary's Nutritionals, LLC is a wholly owned subsidiary of Mary's Medicinals, LLC. Information provided in this report is for CBD rich hemp cultivated by Elite Botanicals, Loveland CO.



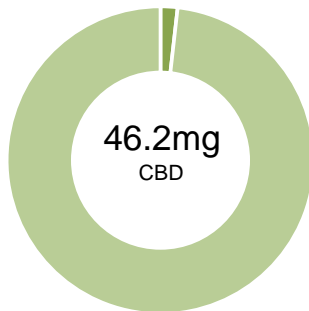
Mary's Pet Pen

Batch ID: H0626713

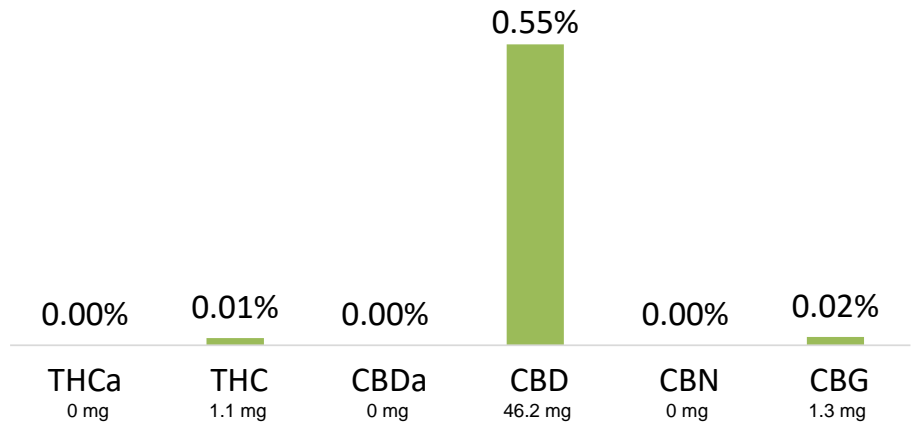
Reported: 6-Nov-2017

Type: Topical

Test: Potency

CANNABINOID PROFILE

■ Total Potential THC 1.1mg **
■ Total Potential CBD 46.2mg **



** Total Potential THC/CBD is calculated using the following formulas to take into account the loss of a carboxyl group during decarboxylation step.

Total THC = THC + (THCa * (0.877)) and Total CBD = CBD + (CBDa * (0.877))

% = % (w/w) = Percent (Weight of Analyte / Weight of Product)

NOTES:

Free from visual mold, mildew, and foreign matter.

FINAL APPROVAL

Mua Vue
26-Oct-2017
10:51 AM

Chris Jungling
6-Nov-2017
11:34 AM

PREPARED BY / DATE

APPROVED BY / DATE

Testing results are based solely upon the sample submitted to Botanacor Services, LLC, in the condition it was received. Botanacor Services, LLC warrants that all analytical work is conducted professionally in accordance with all applicable standard laboratory practices using validated methods. Data was generated using an unbroken chain of comparison to NIST traceable Reference Standards and Certified Reference Materials. This report may not be reproduced, except in full, without the written approval of Botanacor Services, LLC.